

## CUTTIN STATION

Implementing unit dose in your hospital provides many benefits, as dispensing the entire blister card to the patient is not economical. However, cutting up blisters by hand is time consuming and can potentially be dangerous.

The Cuttin Station™ automatic blister cutter eliminates the need for dies or manual blister cutting for a wide variety of blister sizes and shapes. Fast, safe and affordable automation saves your technicians from the repetitive stress of manual cutting, keeps their hands away from blades, and allows them to use their time for more valuable activities.



### Specifications:

**Dimensions:** W 23 in x D 26 ½ in x H 14 ¾ in  
W 585.4mm x D 673.8mm x H 374.6mm

**Weight:** 19 lbs / 8.62 kg

**Speed:** Up to 7,000 units per hour. Varies based on blister card design. For example, a speed of 3,734 units per hour for a 5 x 3 blister card.

**Display:** Touch Panel LED Screen

**Power:** 120/240 V, 50/60 Hz



Watch Video



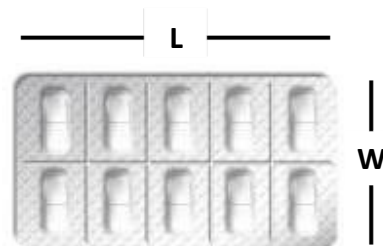
User Manual

## Blister Requirements

### Blister card dimensions (L x W x H)

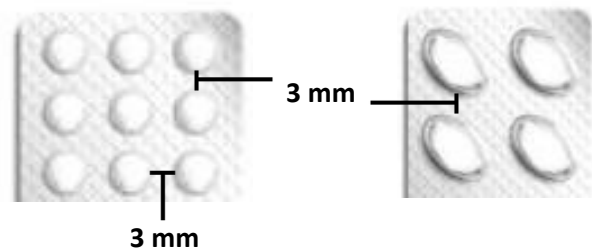
Maximum card dimensions: 139.7 x 76.2 x 12.7 mm

Minimum blister card width: 31.75 mm



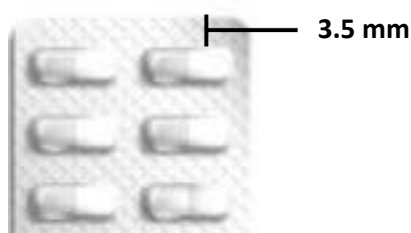
### Blister bubble gap dimension

The minimum required distance between blisters is 3 mm



### Blister bubble to card edge

The minimum required distance from the blister bubble to the edge of the blister card is 3.5 mm



### Blister card thickness

The maximum card thickness is 0.7 mm

Capable of cutting aluminum blister cards

