



Cuttin Station™

Automatic Blister Cutting Machine



Eliminates manual cutting



Fast and efficient



Most affordable unit in the market

Specifications	
Dimensions	17.3" L x 17.5" W x 14.75" H 43.94 cm x 44.45 cm x 37.47 cm
Weight	23 lbs / 10.43 kg
Speed	Up to 7,000 units per hour <i>Varies based on blister card design. For example, a speed of 3,734 units per hour for a 5 x 3 blister card</i>
Display	Touch panel LED screen
Power	120/240 V : 50/60 Hz

[Click here](#) or scan the QR code to see it in action!



Implementing unit dose in your hospital provides many benefits, as dispensing the entire blister card to the patient is not economical. However, cutting up blisters by hand is time consuming and can potentially be dangerous.

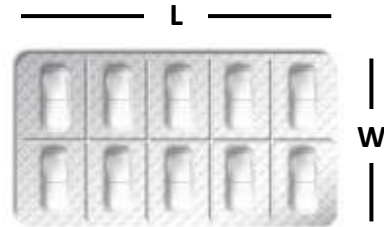
Adding safe and affordable automation to this process through the **Cuttin Station™** saves your technicians from the repetitive stress and keeps their hands away from blades. It also allows them to use their time for more valuable activities.





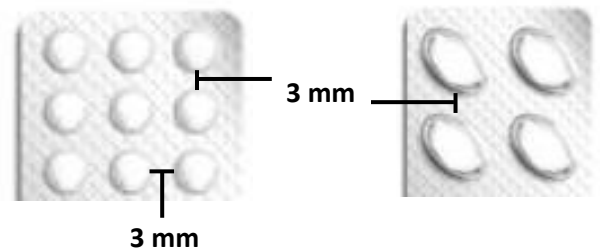
Blister card dimensions (L x W x H)

Maximum card dimensions: 139.7 x 76.2 x 12.7 mm
Minimum blister card width: 31.75



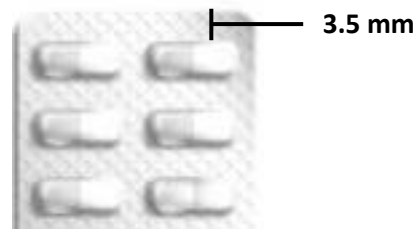
Blister bubble gap dimension

The minimum required distance between blisters is 3 mm



Blister bubble to card edge

The minimum required distance from the blister bubble to the edge of the blister card is 3.5 mm



Blister card thickness

The maximum card thickness is 0.7 mm
Capable of cutting aluminum blister cards

