



FILLIN STATION

by

ACCU-CHART®

This manual provides essential guidance for operating, adjusting, and maintaining the Fillin Station. It highlights adjustment and setup steps, cleaning, and proper care instructions to ensure reliable packaging of pills and long equipment life.

Table of Contents

1. Introduction
 2. Safety Precautions
 3. Components and Description
 4. Setup Instructions
 5. Operating Instructions
 6. Maintenance and Cleaning
 7. Troubleshooting
 8. Technical Specifications
 9. Warranty and Support
 10. Contact Information
-

1. Introduction

Dear Valued Customer,

Welcome to the Fillin Station. Accu-chart's latest advancement in automated pill filling technology. Engineered for precision and efficiency, the Fillin Station is designed to integrate seamlessly with the iPack RX strip packaging system, enhancing your existing workflow without added complexity.

By ensuring consistent and even pill distribution across every cycle, the Fillin Station significantly improves filling accuracy while increasing overall production capacity. Its automated operation reduces manual handling, allowing your staff to focus on higher-value tasks and improving operational efficiency across your pharmacy or production environment.

Built with reliability and ease of use in mind, the Fillin Station delivers dependable performance with minimal training required. Whether you are scaling operations or optimizing your current process, it provides a streamlined solution that supports both speed and accuracy.

For customized pill templates tailored to your specific workflow and product requirements, contact MaxiPak today.

If you experience any issues or have questions, our support team is ready to assist you.

1. Contact our **Technical Support team** at techsupport@accuchart.com
 - For best and efficient support, please include a **picture or short video** of the issue in your email.
 - You can also view our **step-by-step video guide** by clicking the link or scanning the QR code provided in this manual.



Fillin Station User Manual by ~~ACCU-CHART~~[®]

This manual will guide you through setup, operation, maintenance, and troubleshooting to ensure optimal performance and long-term reliability.

2. Safety Precautions

To ensure safe and reliable operation of the Fillin Station, please observe the following precautions:

- *Never attempt to remove the Fillin Station while the machine is in operation.*
- *Always make sure that the Fillin Station is properly secured to the iPack RX.*
- *Keep hands clear of moving components during operation.*
- *Do not operate the machine near water or in high-humidity environments.*
- *Do not pick up the unit by the pill shoot. Picking up the unit in this way may result in damage to the unit.*



**SAVE THESE
INSTRUCTIONS**

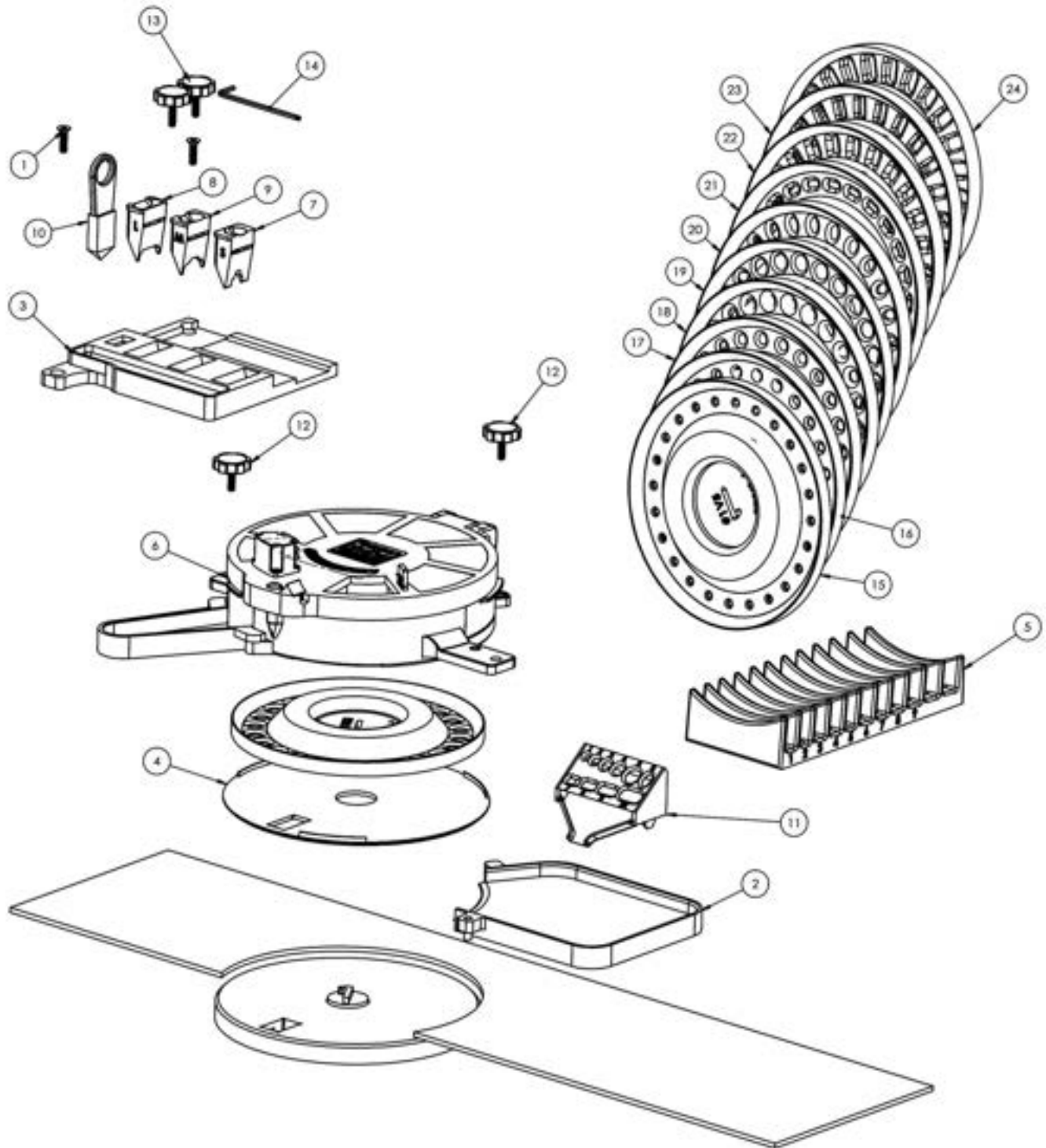
3. Components and Description

This section outlines the major components of the Fillin Station, providing both detailed descriptions and a quick-reference table. These components are labeled in the accompanying diagram and referenced throughout the manual.

Fillin Station User Manual by ACCU-CHART®

3. Components

3a. Top Level Components



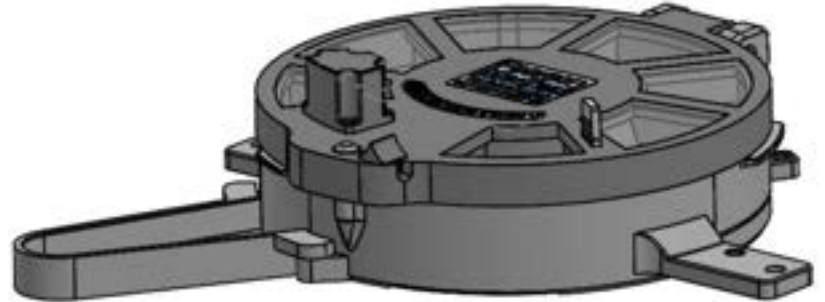
Fillin Station User Manual by ACCU-CHART®

3a. Top Level Components Key

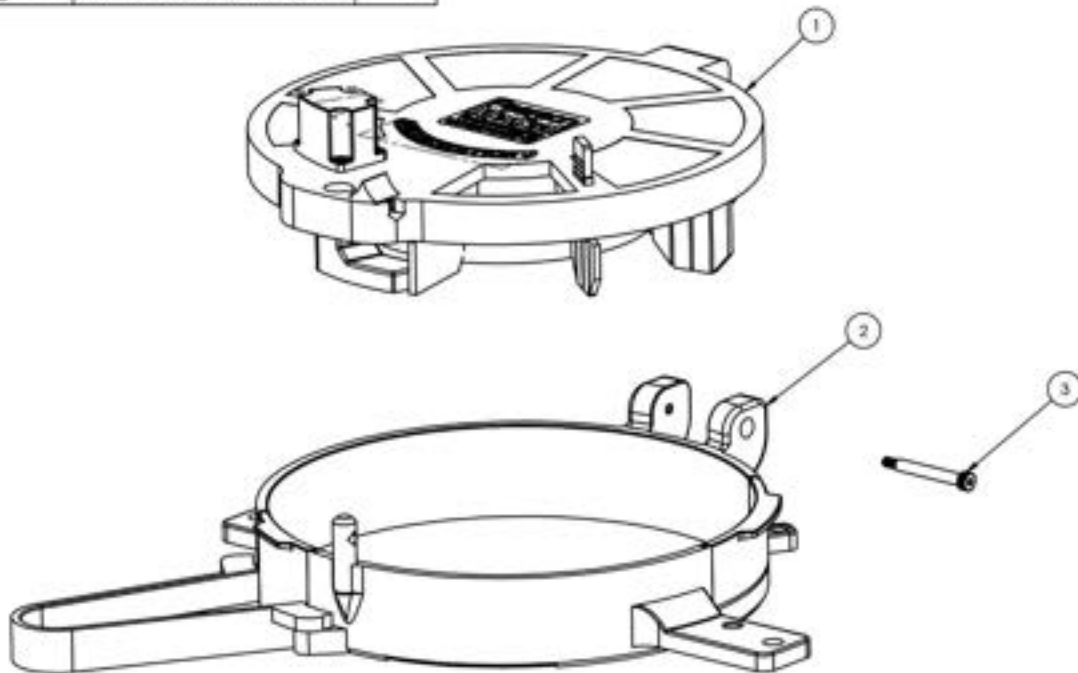
ITEM NO.	PART NUMBER	DESCRIPTION	QTY.
1	FHSCS-.25_20 x 1.00	1/4-20 x 1L Flat Head Socket Cap Screw	2
2	FST-000-001	Tray, IPak Pill Feeding	1
3	FST-000-002	Tray, IPak Tool	1
4	FST-000-003	Top Plate, IPak	1
5	FST-000-004	Tray, Disk Holder IPak	1
6	FST-003-000	Assy, IPak Core Unit	1
7	FST-004-OSM	IPak Throat, SMALL	1
8	FST-004-OLG	IPak Throat, LARGE	1
9	FST-004-MED	IPak Throat, MEDIUM	1
10	FST-005-000	Throat Puller, IPak	1
11	FST-006-000	Assy, Pill Sorter IPak	1
12	PUR-000-078	18-8 Stainless Steel - THUMB SCREW	2
13	PUR-000-079	18-8 Stainless Steel, THUMB SCREW	2
14	PUR-000-080	5/32 ALLEN KEY	1
15	TMP-FST-001	Template, #1 Fillin Station	1
16	TMP-FST-002	Template, #2 Fillin Station	1
17	TMP-FST-003	Template, #3 Fillin Station	1
18	TMP-FST-004	Template, #4 Fillin Station	1
19	TMP-FST-005	Template, #5 Fillin Station	1
20	TMP-FST-006	Template, #6 Fillin Station	1
21	TMP-FST-007	Template, #7 Fillin Station	1
22	TMP-FST-008	Template, #8 Fillin Station	1
23	TMP-FST-009	Template, #9 Fillin Station	1
24	TMP-FST-010	Template, #10 Fillin Station (CUSTOM)	1

Fillin Station User Manual by ACCU-CHART®

3b. Core Unit Components



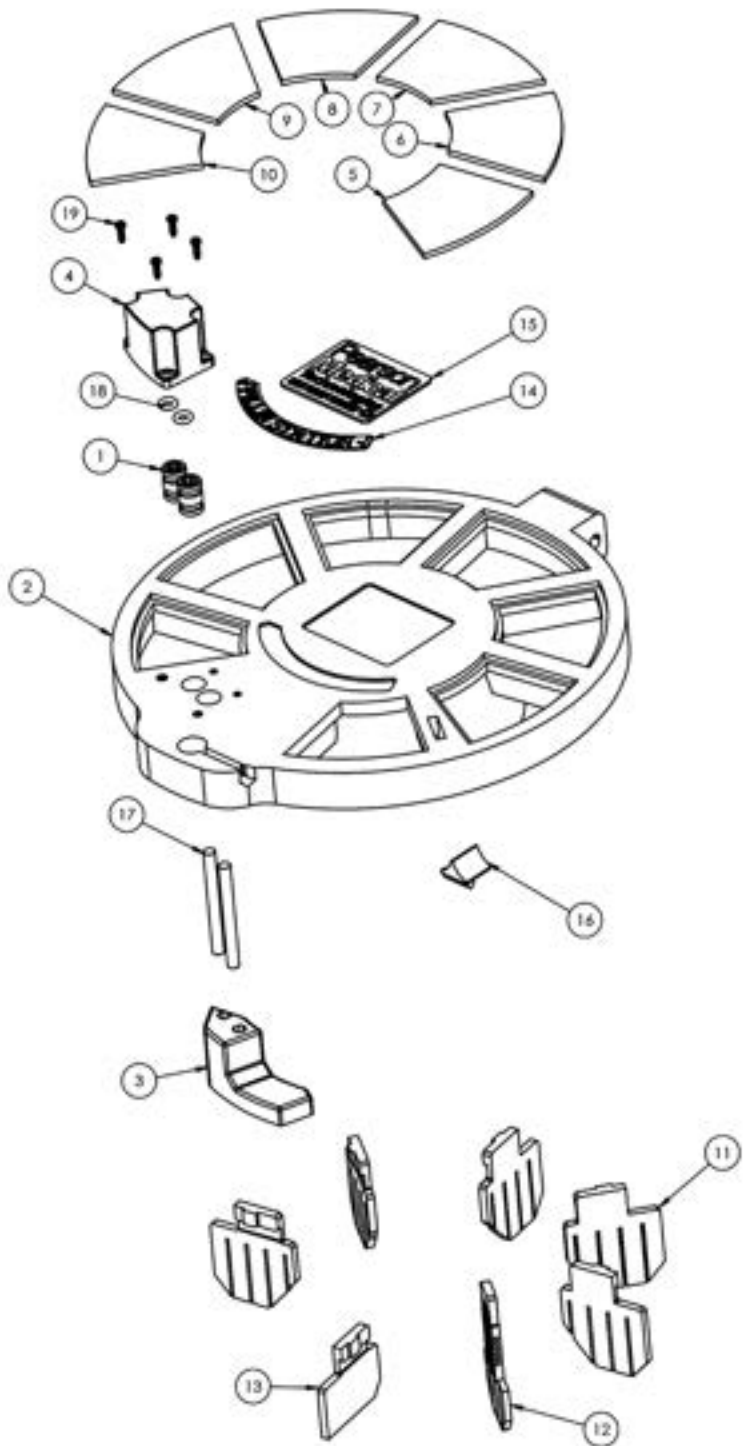
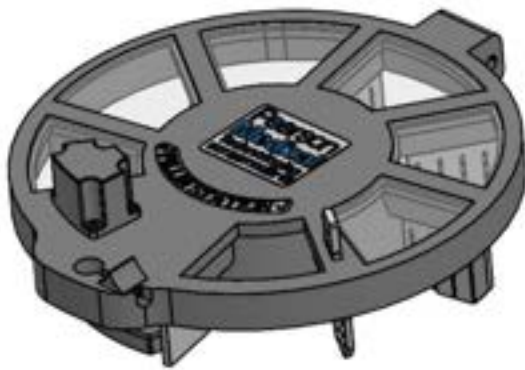
ITEM NO.	PART NUMBER	DESCRIPTION	QTY.
1	FST-001-000	Assy, IPak Fillin Station Lid	1
2	FST-002-000	IPak, Fillin Station Base	1
3	SHSS-0.25-1.75-10-24HD	SHOULDER SCREW, 0.25" DIA., x 2.25"	1



Fillin Station User Manual by ACCU-CHART®

3c. Lid Assy. Components

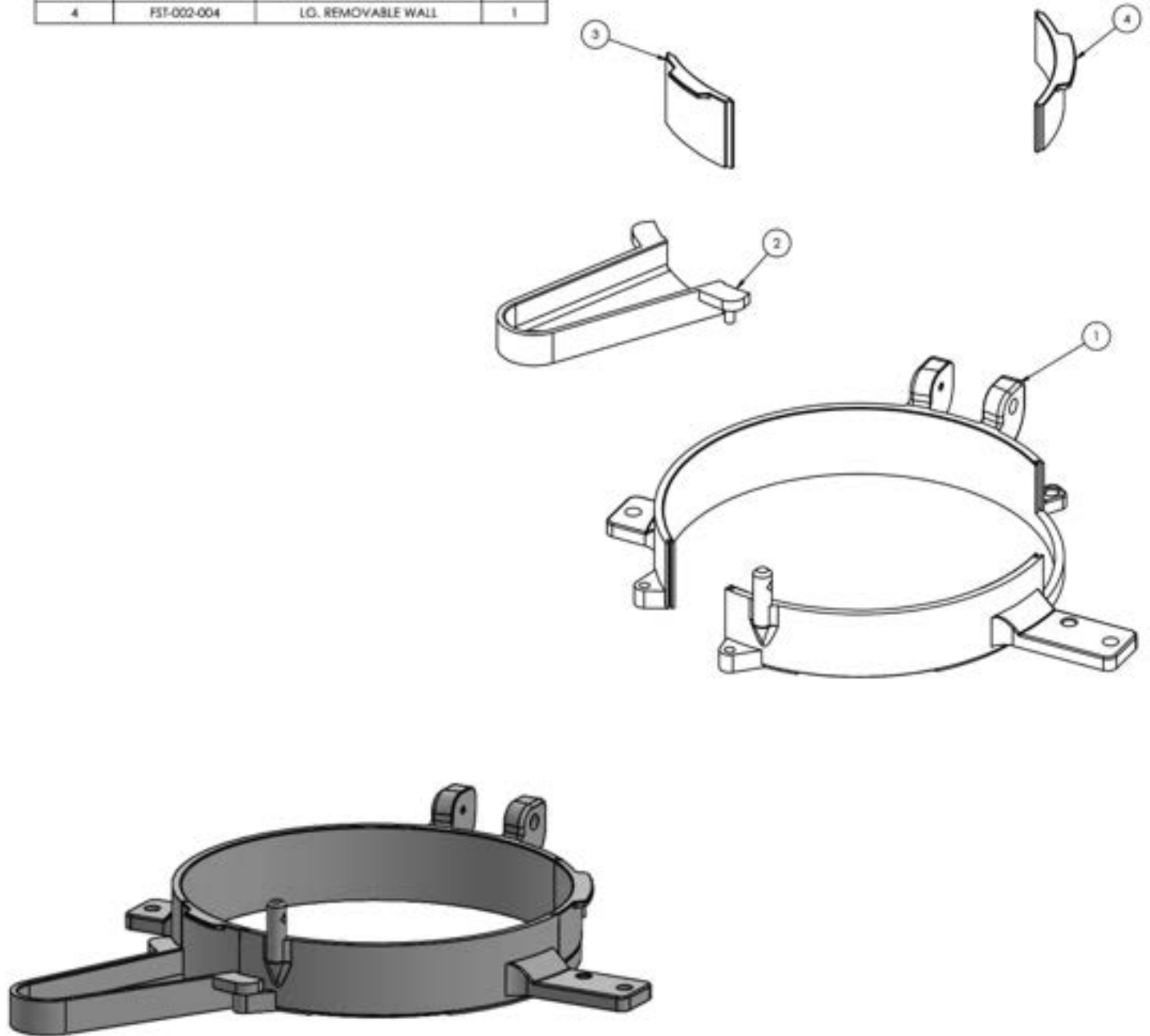
ITEM NO.	PART NUMBER	DESCRIPTION	QTY.
1	CUT-001-005	IGUS BEARING.D.0.25 ID-0.751LONG	2
2	FST-001-001	Lid, IPAK Fillin Station	1
3	FST-001-002	IPak, Diverter	1
4	FST-001-003	IPak, Diverter Cover	1
5	FST-001-004	IPak, Window 1	1
6	FST-001-005	IPak, Window 2	1
7	FST-001-006	IPak, Window 3	1
8	FST-001-007	IPak, Window 4	1
9	FST-001-008	IPak, Window 5	1
10	FST-001-009	IPak, Window 6	1
11	FST-001-010	IPak, Brush	5
12	FST-001-011	IPak, Brush Adjustable	1
13	FST-001-012	IPak, Brush Backfill	1
14	FST-001-013	Logo, IPak Fillin Station	1
15	FST-001-014	Logo, IPak Pearson	1
16	FST-001-015	IPak_LidLatch	1
17	FST-001-016	316 Stainless Steel, 1/4" Diameter, 2-1/2" Long	2
18	PUR-000-034	Oil-Resistant Buna-N O-Ring	2
19	RHTFS-3MM-10MM	Phillips Rounded Head Thread-Forming Screws	4



Fillin Station User Manual by ACCU-CHART®

3d. Base Assy. Components

ITEM NO.	PART NUMBER	DESCRIPTION	QTY.
1	FST-002-001	RING BASE	1
2	FST-002-002	ARM	1
3	FST-002-003	SMALL REMOVABLE WALL	1
4	FST-002-004	LG. REMOVABLE WALL	1



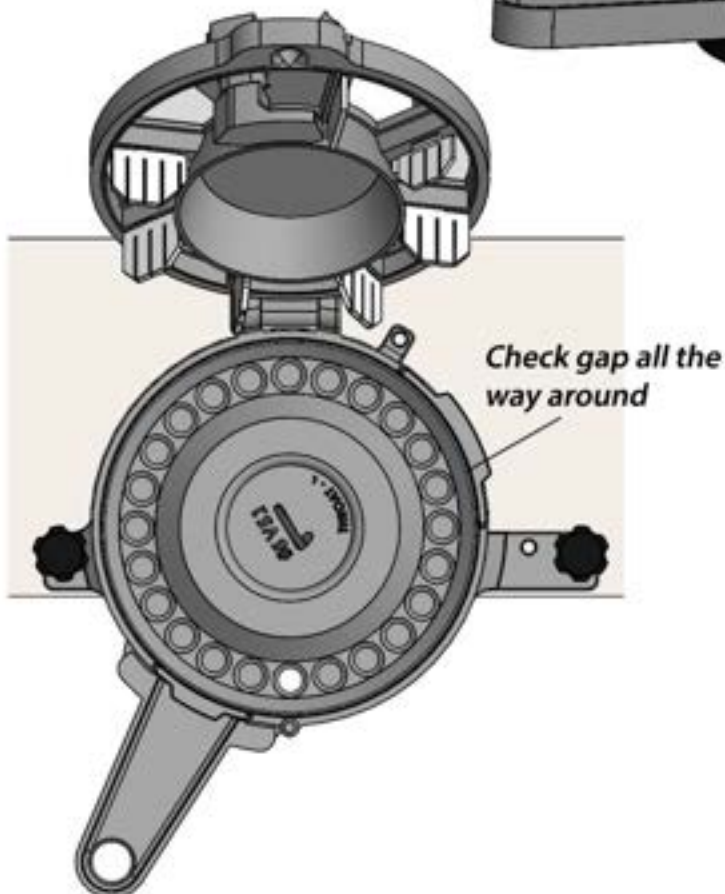
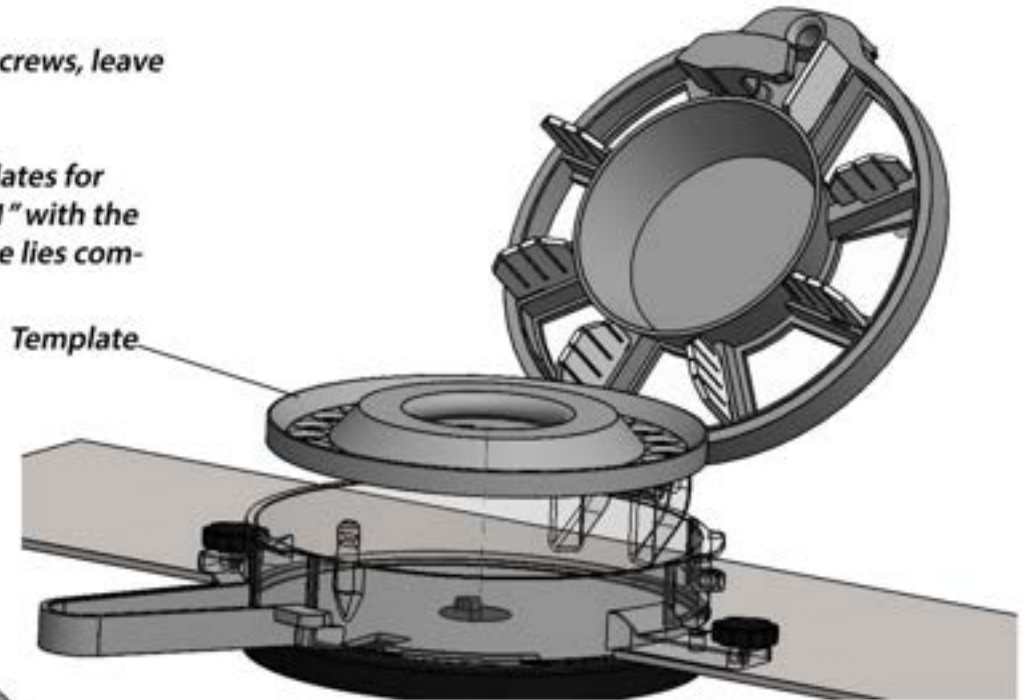
Fillin Station User Manual by ACCU-CHART®

4. Set Up / Install

4b. Step 2

Do not fully tighten the thumb screws, leave them loose for adjustment.

Insert any of the provided templates for alignment, aligning the center "1" with the machine. Make sure the template lies completely flat on the top plate.



4c. Step 3

Make certain that the template is as centered inside the Core Unit base ring as possible. Keeping the thumb screws loose, you may need to move and adjust the base ring so that the template is centered. Once centered, the template should turn freely inside the base ring.

Fully tighten the thumb screws.

Remove template.

Fillin Station User Manual by ACCU-CHART®

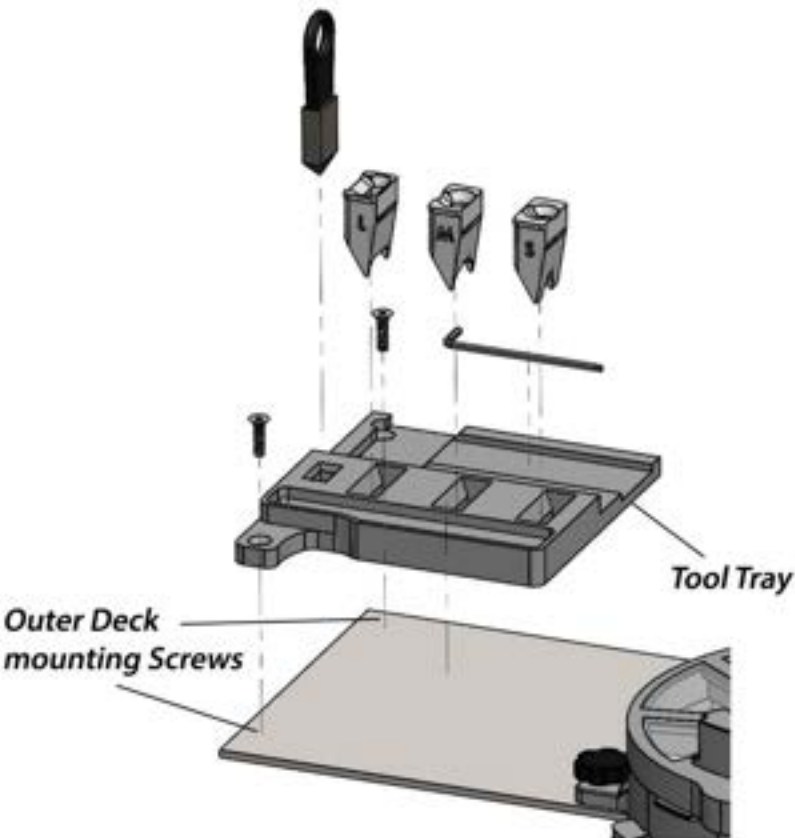
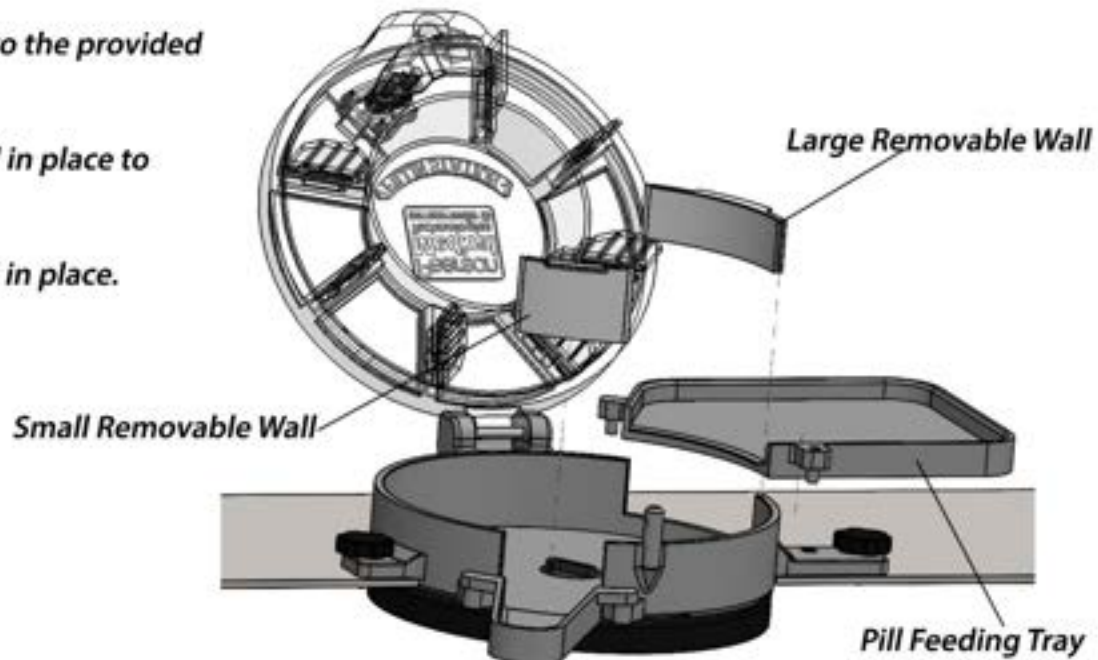
4. Set Up / Install

4d. Step 4

Insert the Pill Feeding Tray into the provided slots.

Set the Large Removable Wall in place to lock in the tray.

Set the Small Removable Wall in place.



4e. Step 5

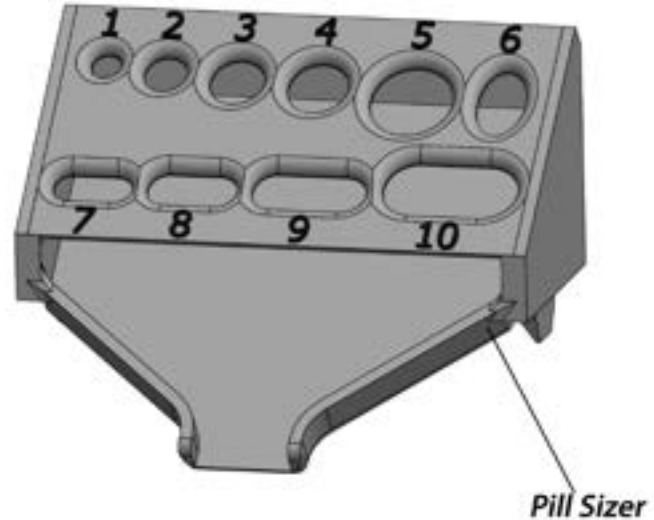
Remove (2) outer deck mounting screws from the iPack RX machine.

Attach the Tool Tray using the provided longer screws.

Place Throats, Allen Wrench, and Throat Puller into the tray.

Fillin Station User Manual by ACCU-CHART®

5. Operating Instructions

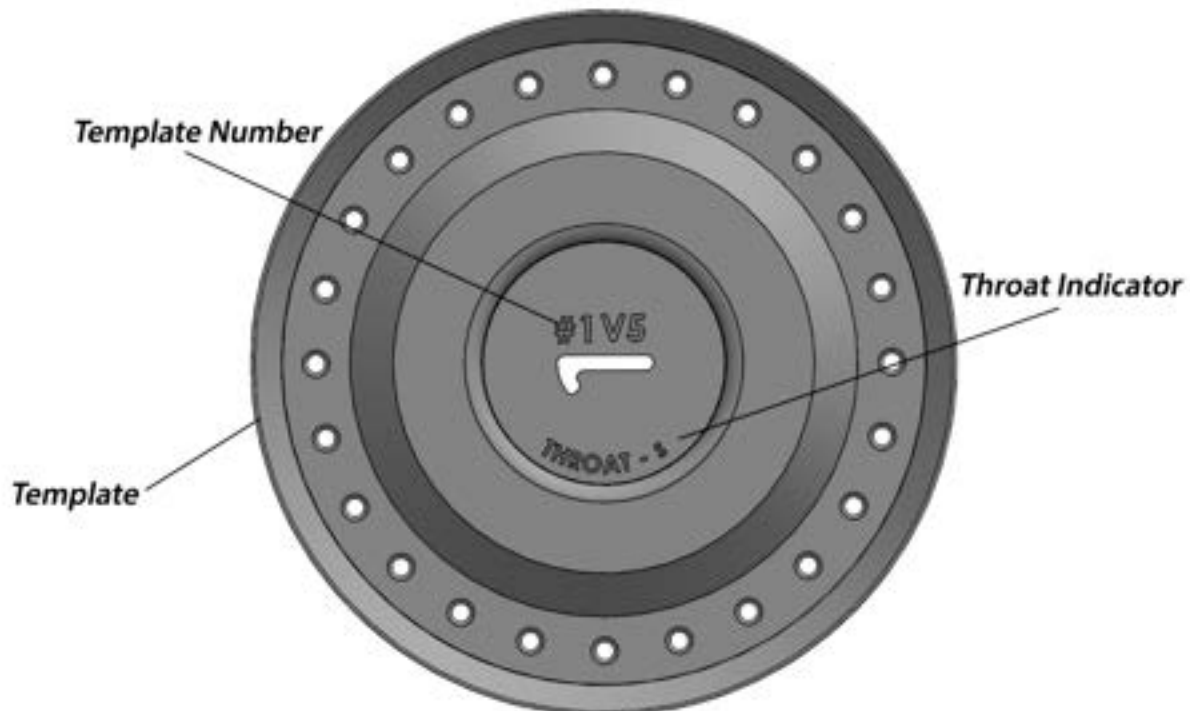


5a. Step 1

Using the Pill Sizer, determine which template to use with pill you intend to run.

Once the template is selected, read the marked "THROAT" size.

Install the correct Throat with the letter facing you, into the throat of the iPack Rx.

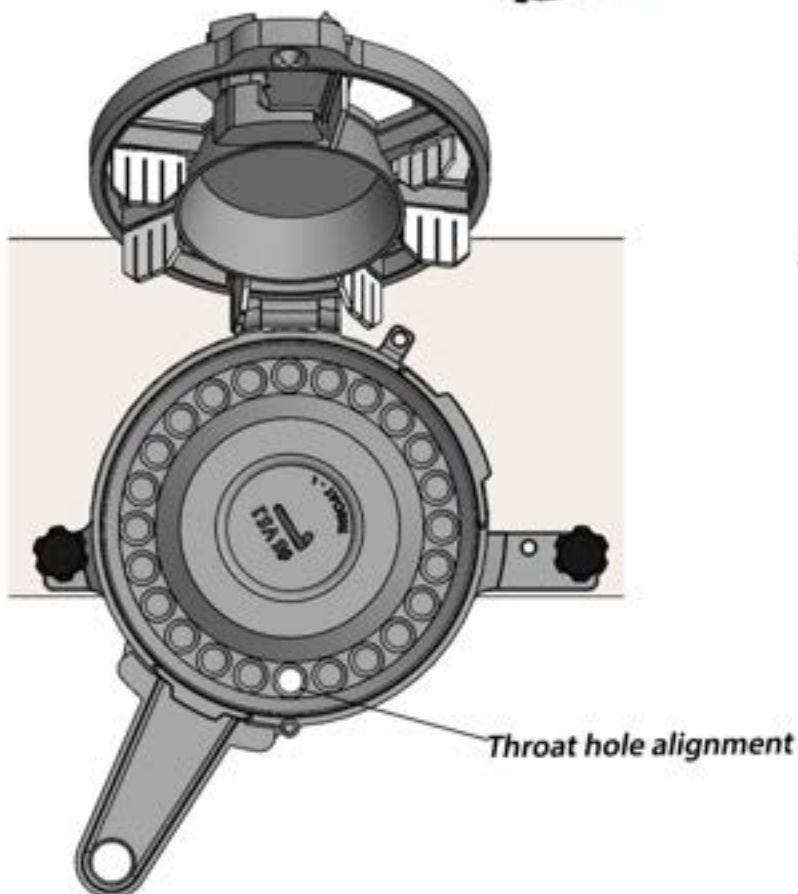
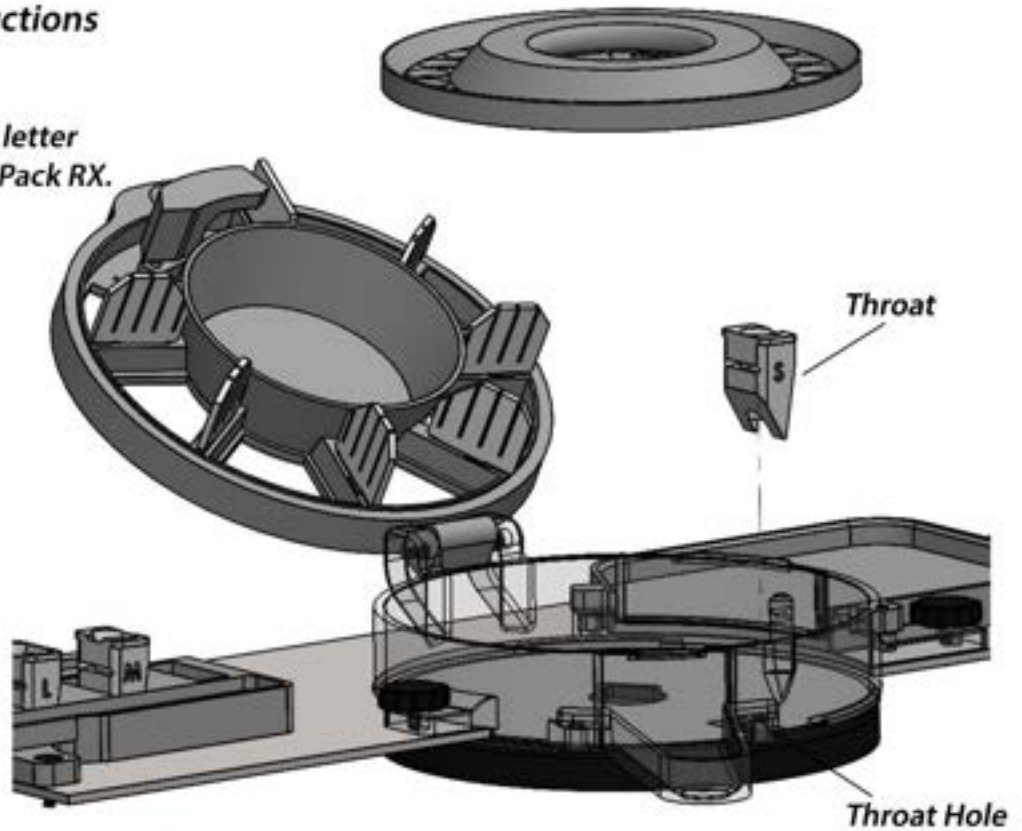


Fillin Station User Manual by ACCU-CHART®

5. Operating Instructions

5b. Step 2

Install the correct Throat with the letter facing you, into the throat of the iPack RX.



5c. Step 3

Rotate Template (may click into place) until hole is aligned perfectly over throat hole.

Close lid and secure latch into place.

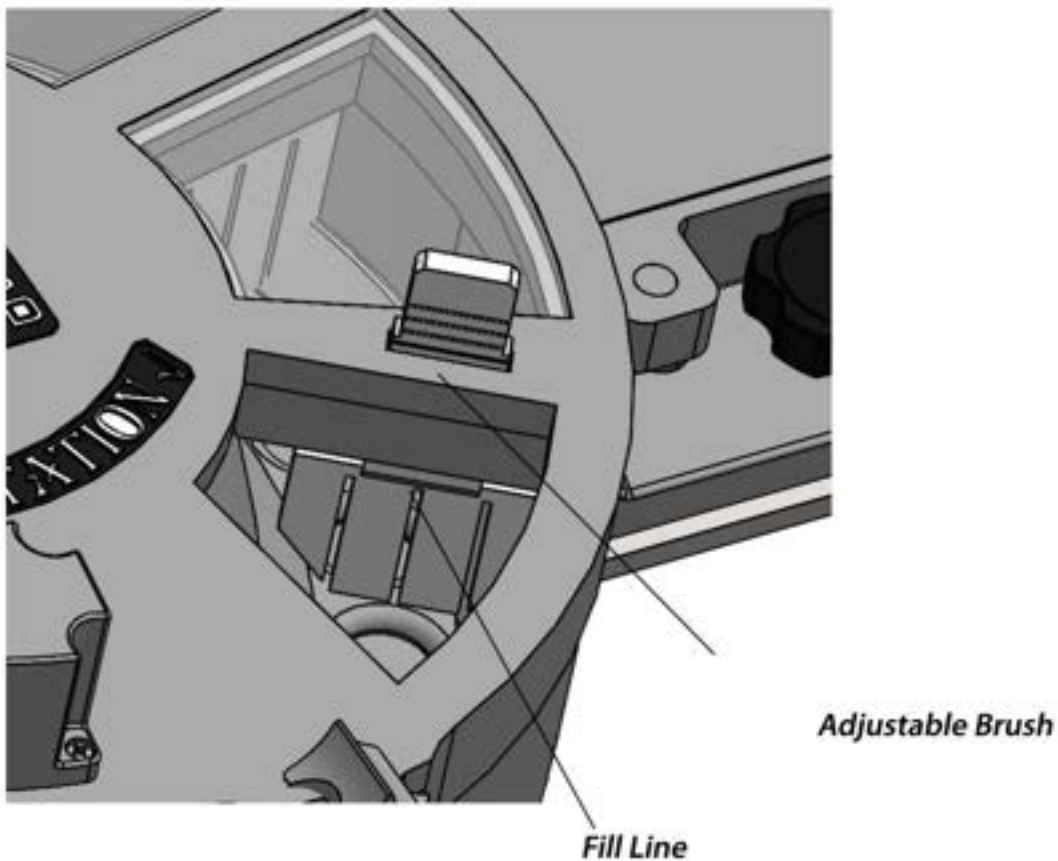
The Fillin' Station is now ready to run.

Fillin Station User Manual by ACCU-CHART®

5. Operating Instructions

5d. Step 4

Some specific pills require the adjustable brush to be moved up or down. We track this by counting the number of "clicks" starting from the lowest setting (brush all the way down). This is used to help control the flow of pills going from section to section inside the Fillin Station. This progress can be watched through the clear glass windows on the lid. If the flow is excessive, a flood of pills make their way to the last section, where the pill drops and may cause unfavorable operating conditions. The newest versions of the templates will be marked with the set number of clicks recommended for each pill size.



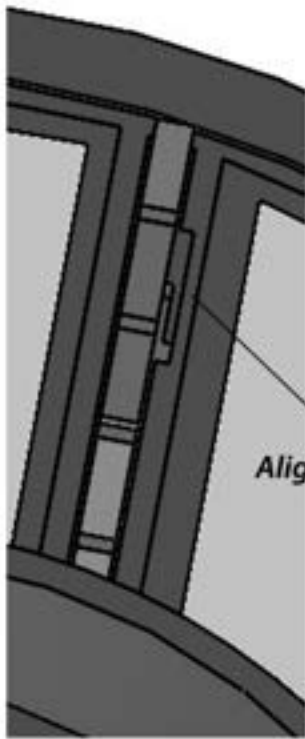
5e. Step 5

Filling the machine. Different pill sizes may need filled at different rates. For a starting reference begin by filling the machine to just below the top of the adjustable brush. If too many pills reach the final section, try adding less pills of that size. If the template holes seem to be running empty, add more pills.

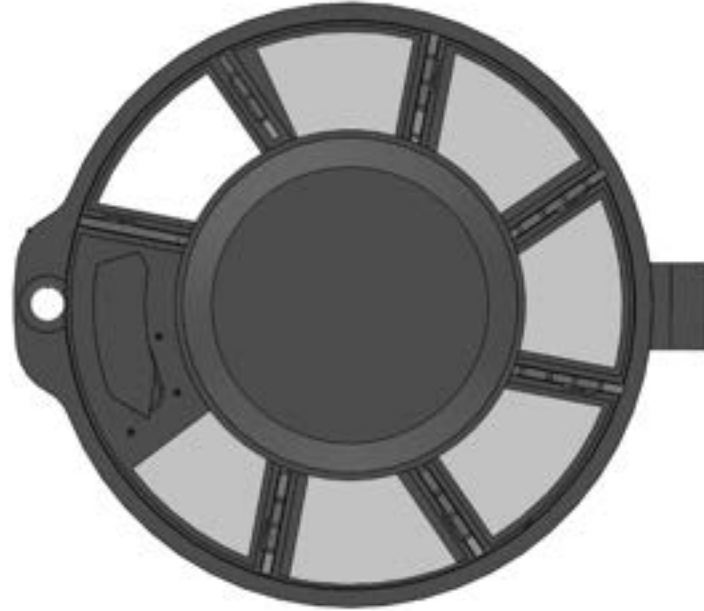
Fillin Station User Manual by ACCU-CHART®

6. Maintenance and Cleaning

The Fillin Station, templates, and brushes may be wiped down with Clorox or similar wipes both inside and out. Always allow to dry completely before operating.



Alignment Notch



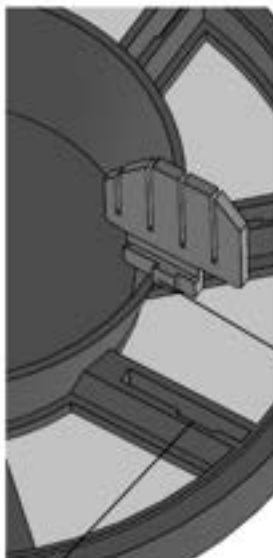
The specialized rubber brushes are designed to clip into place without requiring the use of tools. This makes removing for cleaning or replacing quick and easy.

To Remove

Firmly grasp the brush, and pull it to align the brushes tab with the notch in the lid.

To Replace

Align the brushes tab with the lid's slot, firmly press into place, then with a firm hold, slide the brush back into place.



Brush Tab

Lid Notch

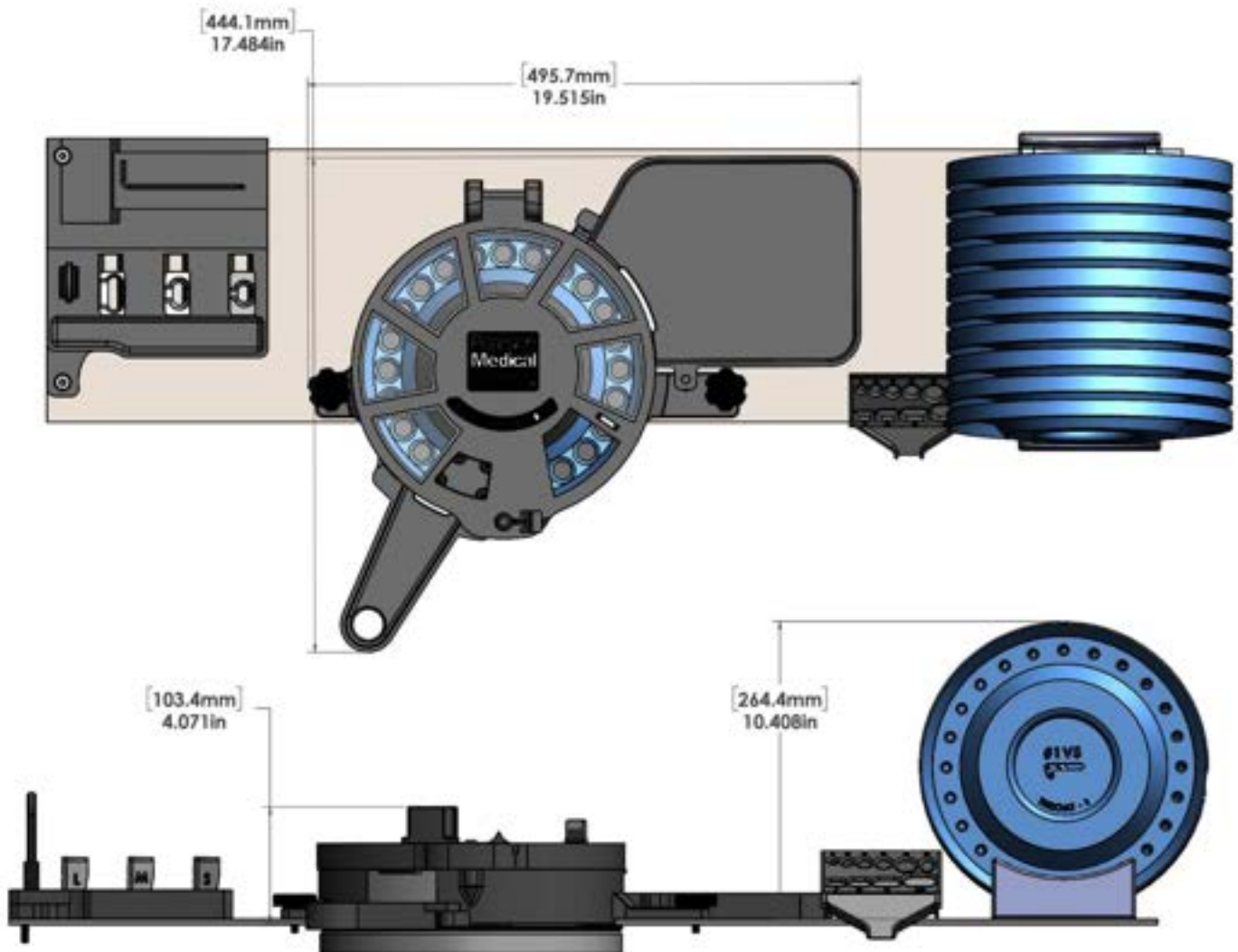
Fillin Station User Manual by ACCU-CHART®

7. Trouble Shooting

The templates provided were selected to cover a wide variety of pill sizes. If these templates do not suit the needs of your pill, please contact us for a custom sized template.

Occasionally, a clicking occurs as a pill is stopped by the diverter. In most cases this will work itself out and continue running without issue. This is by design. The new diverter system was designed to either push extra pills aside, or in case of a potential jam, lift and pin a pill beneath it until it moves through the back of the diverter, preventing doubles in packing. If a pill becomes stuck in the diverter and does not work itself out, you may have overloaded the machine causing too many pills to flood the diverter area, otherwise you may need a custom sized template for proper function.

8. Technical Specifications



9. Warranty and Support

- *1-year limited warranty*
- *Covers defects and failures*
- *Excludes wear and tear items and misuse*
- *Remote service contract \$300*
- *Optional on-site service (contact us for a quote)*

10. Contact Information

~~ACCU-CHART~~[®]

Technical Support 847-252-7300 option 6 techsupport@accuchart.com