

Vantage Series

The Cadet Twin[®] 2x2, with a larger package size to accommodate the large variety of oral solid sizes that is now available. One hundred and twenty units per minute set at the standard 1.56 x 2.00 package size. Variable Package Sizes, Complete Sensors and Thermal Transfer Printing Standard.

Cadet Twin[®] 2x2



Distributed By:

ACCU-CHART[®]



Accurate Medicine Through Barcodes

Accu-Chart[®]

1305 Remington Rd. Suite I Schaumburg, IL 60173

Ph: 847-252-7183 847-252-7300 Fax: 630-307-5982

www.accuchart.com

The Cadet[®], Cadet Twin[®], and Wet Cadet[®] are all registered trademarks of Euclid[®] Medical Products.

Equipment & Accessories

Order Number	Description
VC2COM2X2-WO	Cadet Twin® - 2" x 2" package size Computer Printing System Includes: Machine, Cable, Software, Variable Package Length, 9 disks and 5 Chutes On-site Installation (Computer and Freight Charge Extra)
9EVS	Euclid Vantage Software Features: True Type Fonts, Controlled Drug Symbol, Linear & 2D Barcodes, Management Reports, Password Protection, Pill Camera, Biometric Scanner

Packaging/Printing Films

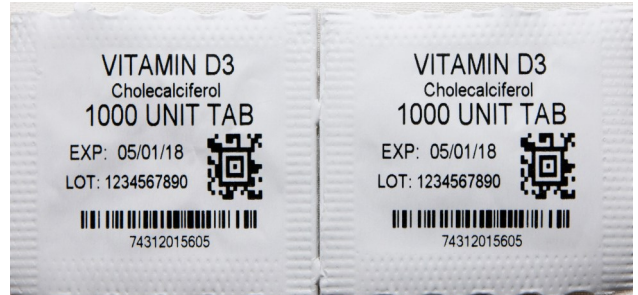
Order Number	Description
940C	#40 Clear PP 2 rolls of 4.0" x 1700'/roll
940USAUV	#40 Ultra Screen™ 2 2 rolls of 4.0" Amber UV Polyester 1400'/roll
940FC	#40 Foil C/P Computer Print 2 rolls of 4.0" foil x 1500'/roll
9TTPF4	Thermal Transfer Print Film 4" Color: black 8 rolls of 4" x 2000'/roll

Other Supplies

Order Number	Description
9TWS	Work Station Cart
9CBC	Cleaning Brush for Sealing Jaws

Specifications

Speed	120 units per minute
Weight	Computer Print - 130 lbs.
Size	Computer Print Length = 42" Width = 17" Height = 13 ½"
Printing	Computer Printing with Thermal Transfer Print head
Feeder	Manual Fill Disks - 9 assorted disks with 5 chutes
Electrical	120 VAC, 11.5 amps full current load Also available, for extra charge, 220/240 VAC, 50 or 60 Hz 1 phase
Warranty	One year on parts and labor in plant
Patent Numbers	USA: 4,493,178 Canada: 1178879



Cadet Twin®

2x2

Vantage Series

ACCU-CHART®



Accurate Medicine Through Barcodes

Accu-Chart®

1305 Remington Rd. Suite I Schaumburg, IL 60173
Ph: 847-252-7183 847-252-7300 Fax: 630-307-5982
www.accuchart.com